

Courses & Distances

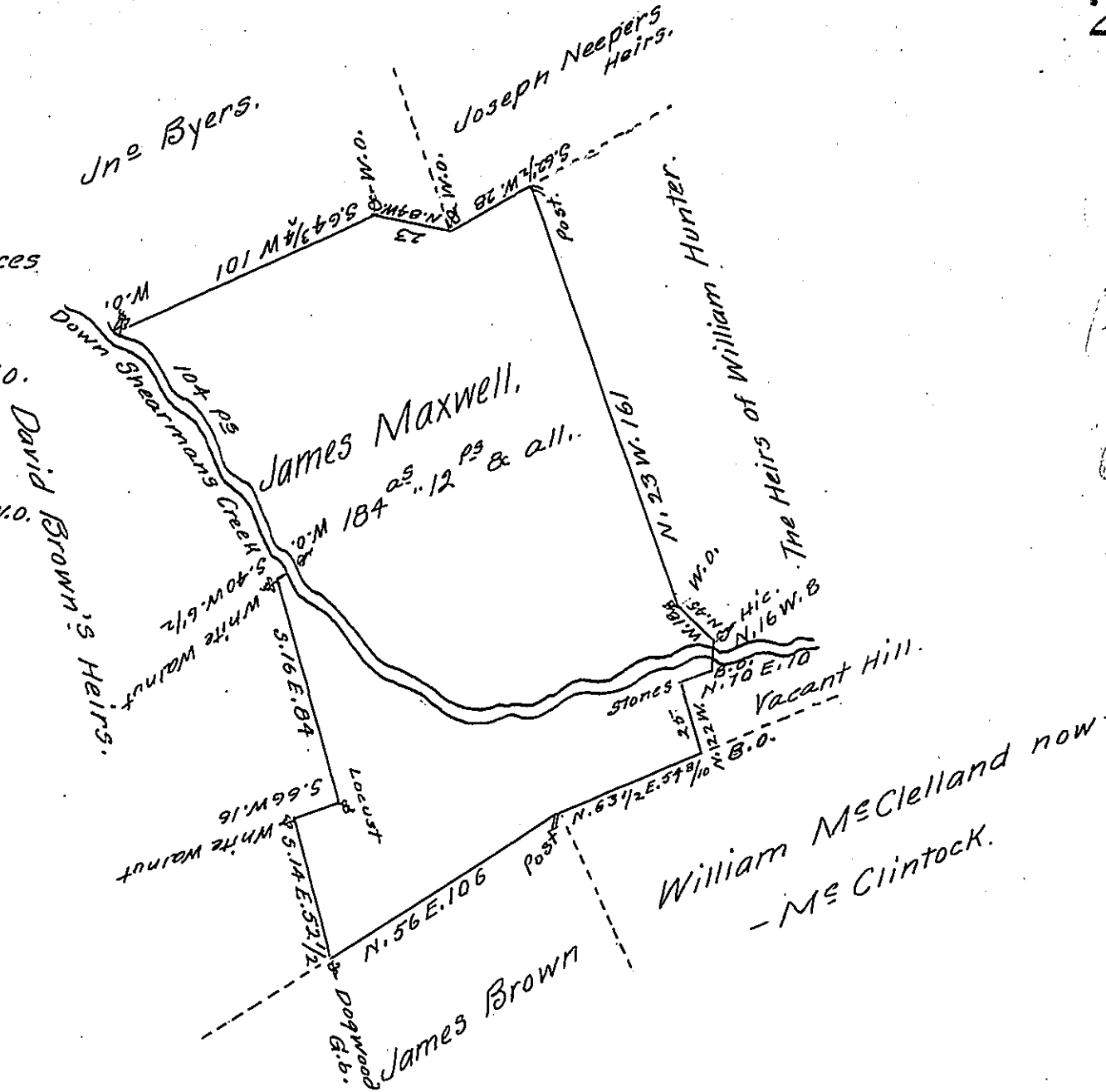
Down Shearmans

Creek from the W.O.

S. 37 E. 24

S. 38 E. 80

104 to W.O.



The Draught of a tract of Land situate in Tyboine Township
 Cumberland County containing one hundred & Eighty four acres &
 12 perches & allowance &c. Resurveyed the 16th of August 1804 on
 a Warrant of 200^{as} Dated May 7th 1787 and on an order of the Board
 of Property Dated 13th April 1803 granted to James Maxwell.

W^m Ramsey D.S.

To Sam^l Cochran Esquire
 Surveyor Gen^l of Pennsylv^a.

IN TESTIMONY that the above is a copy of the original remaining on file in
 the Department of Internal Affairs of Pennsylvania, made
 conformably to an Act of Assembly approved the 16th day of
 February, 1833, I have hereunto set my Hand and caused
 the Seal of said Department to be affixed at Harrisburg,
 this twenty second day of December 1905.

Geo. P. Pearson
 Secretary of Internal Affairs.